

IMAGE1 S™ RUBINA™ – mORe to discover



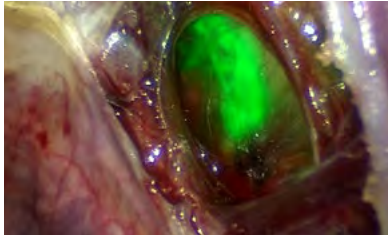
Visualization of the Lymphatic System in Gynecology with OPAL1® NIR/ICG Technology

- Non-radioactive lymph node detection method in the case of cervical, endometrial, vulvar or mammary carcinoma
- Multidisciplinary, can be used for laparoscopic and open surgical procedures
- Laser-free LED source for white light and NIR/ICG excitation

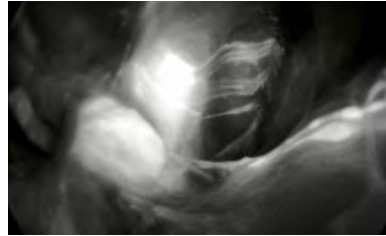
STORZ
KARL STORZ – ENDOSKOPE

IMAGE1 S™ RUBINA™ – mORe to discover

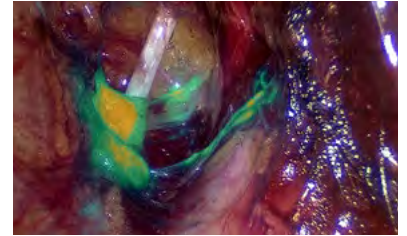
The IMAGE1 S™ 4U RUBINA™ camera head combines 4K imaging technology with fluorescence imaging in the near infrared range for the display of indocyanine green (ICG). OPAL1® NIR/ICG technology and the marker indocyanine green (ICG) enable non-radioactive visualization of the entire lymph system surrounding a tumor in real time. The new Overlay, Monochromatic and Intensity Map image modes can provide additional information about the sentinel lymph node.



Overlay



Monochromatic



Intensity Map

| Our recommended IMAGE1 S™ RUBINA™ set-up | |
|--|---|
| TH121 | IMAGE1 S™ 4U RUBINA™ , OPAL1® NIR/ICG, two-chip 4K UHD camera head, S-Technologies available, progressive scan, low-temperature sterilization, for use with IMAGE1 S™ 4U-LINK |
| TC201 | IMAGE1 S CONNECT® II , connect module, for use with up to 3 link modules, 4K technology, resolution 3840 x 2160 and 1920 x 1080 pixels |
| TC304 | IMAGE1 S™ 4U-LINK , link module, for use with IMAGE1 S™ 4U camera heads, for use with IMAGE1 S CONNECT® TC200 or IMAGE1 S CONNECT® II TC201 |
| TL400 | Cold Light Fountain POWER LED RUBINA™ , with a high-performance light unit for perfusion assessment and standard endoscopic diagnosis, including a LED and a KARL STORZ light cable connection |
| UF101 | One-Pedal Footswitch , one-stage |
| 495NCSC | Fiber Optic Light Cable , with straight connector, extremely heat-resistant, enhanced light transmission, with safety lock, diameter 4.8 mm, length 250 cm |
| TM350 | 32" 4K/3D Monitor , screen resolution 3840 x 2160, image format 16:9, wall mount with VESA 100 adaptor |

| Our ICG telescopes in 5 mm and 10 mm as well as VITOM® II ICG for vulvar and mammary surgery | |
|--|--|
| 26003ARA | HOPKINS® RUBINA™ 0° , NIR/ICG, straight-forward telescope 0°, enlarged view, diameter 10 mm, length 31 cm |
| 26003BRA | HOPKINS® RUBINA™ 30° , NIR/ICG, forward-oblique telescope 30°, enlarged view, diameter 10 mm, length 31 cm |
| 26046ARA | HOPKINS® RUBINA™ 0° , NIR/ICG, straight-forward telescope 0°, enlarged view, diameter 5 mm, length 29 cm |
| 26046BRA | HOPKINS® RUBINA™ 30° , NIR/ICG, forward-oblique telescope 30°, enlarged view, diameter 5 mm, length 29 cm |
| 20916025AGA | VITOM® II NIR/ICG Telescope 0° , with integrated illuminator and observation filter for fluorescence diagnostics with ICG, length 11 cm |

To contact us directly, please send an e-mail to gyn@karlstorz.com

It is recommended to check the suitability of the product for the intended procedure prior to use.
Please note that the described products in this medium may not be available yet in all countries due to different regulatory requirements.

Please inform yourself accordingly in advance for which application the respective preparation is approved in your country.

STORZ
KARL STORZ – ENDOSKOPE
THE DIAMOND STANDARD

KARL STORZ SE & Co. KG
Dr.-Karl-Storz-Straße 34, 78532 Tuttlingen/Germany
Postbox 230, 78503 Tuttlingen/Germany
Phone: +49 7461 708-0
Fax: +49 7461 708-105
E-Mail: info@karlstorz.com

www.karlstorz.com



9612 1066 GYN 5 1.0.09/2020/SE-E